



Cable Laying Products





OVERVIEW

One of our key strengths at Cable Laying Products (CLP) is our ability to tailor our products and services to precisely fit your needs.

Since its inception in 1996 CLP has become the preferred manufacturer and supplier of products to the cable laying industry.

We are in a unique position at CLP to service clients because we have in place in house capabilities to manufacture products from conception through to completion. As CLP has developed a culture to continually improve and tailor products to meet the needs of its clients, our specialised services and products are increasingly in demand from clients around Australia, New Zealand and the Pacific Islands.

OUR GOAL

To achieve and maintain the position of preferred manufacturer and supplier of products to the cable laying industry and other related industries through:

- Delivering superior product knowledge and services to our clients;
- Maximising value for all clients;
- Fostering lasting customer relationships;
- Demonstrating innovation in all aspects of our business;
- Providing a positive, performance enhancing work environment.

OUR HISTORY

CLP has been in operation for over 10 years during which time the company has progressed and developed as client's needs were identified. We endeavour to match our products and services to best meet those requirements. At CLP we pride ourselves on our ability to constantly improve our services. Our manufacturing specialists will ensure that CLP provides the most innovative and cost effective products to the cable laying and related industries.

SPECIALIST SERVICES

At CLP we have developed expertise in the cable laying industry through taking a proactive approach to manufacturing products and evaluating feedback from our clients which can be demonstrated through our innovation ability. This has also enabled CLP to develop leading manufacturing production systems and a working environment where we provide a service to clients that can be measured in days not weeks. We are specialists in, but not limited to, manufacturing and supplying cable products to the following industries:

- Power
- Telecommunications
- Transport
- Mining

Contents

	PAGE
	Aerial Equipment 2
	Cable Laying Accessories 4
	Cable Lubricant 5
	Cable Winching & Jetting Equipment 6
	Conduit & Manhole Cable Guides 7
	Drum Handling Equipment 9
	Hauling Eyes Re-Usable 10
	Mandrels, Swivels & Breakaway Fuses 11
	Quick Flick Shelters 13
	Rodding Equipment - Tigerrod 14
	Underground Cable Equipment 17
	Wire Cable Grips 20

AERIAL EQUIPMENT

Pole Bracket

CLP Code Description

RPB-100 Lightweight Ratchet Pole Bracket



Pole Bracket Adapter

Used with RPB-100 the adapter converts the vertical shaft of the pole bracket to a horizontal axis for fitting a cable guiding chute AGC-301, or a corner block

CLP Code Description

APH-207 Pole Bracket Adapter



Roller Bracket Chutes

CLP Code Description

AGC-301 Guiding Chute



45° Corner Block

Provides a 500mm radius around an inside or outside corner at angles up to 45°. These blocks are mounted on the pole bracket RPB-100 and, with the use of the APH-207, can be converted into guiding chutes. Standard rollers are nylon, PPS or aluminium. Non standard roller profiles can be supplied on request.

CLP Code Description

ACB-0451 45° Corner Block for Single Cable
ACB-0452 45° Corner Block for Double Cable



90° Corner Block

Provides a 500mm radius for angles up to 90°. Application and roller specifications are the same as for the 45° blocks.

CLP Code Description

ACB-0901 90° Corner Block for Single Cable
ACB-0902 90° Corner Block for Double Cable



Overhead Cantenary Stringing Rollers

For use with Fibre or Coaxial cable up to 25mm in diameter.

CLP Code Description

ASR-040 Single Roller
ASR-080 Double Roller



AERIAL EQUIPMENT

Overhead Cable Puller

CLP Code	Description
ADR-120	Double Overhead Roller



Insulator Clamp Bracket

CLP Code	Description
ICB-001	Clamps directly onto the insulator. Tension can be easily adjusted, allowing the unit to be turned 90°, thus dropping the cable onto the insulator.



Cross Arm Bracket

Versatile and easy to use, it has a hinged top flap allowing quick entrapment of the cable. Note: Ratchet not included.

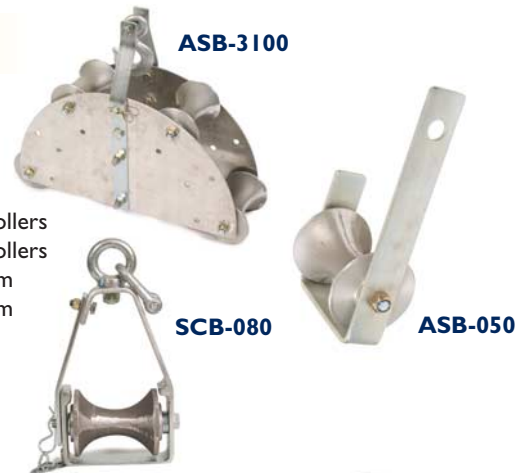
CLP Code	Description
CAB-001	50mm Roller
CAB-002	80mm Roller



Single Cable Blocks

Rollers are manufactured from Nylon or Aluminium.

CLP Code	Description
ASB-050	Single Cable Block
ASB-3100	Aluminium sheave, 150mm radius, 100mm rollers
ASB-6140	Aluminium sheave, 300mm radius, 140mm rollers
SCB-050	Single capture block, suits cable up to 50mm
SCB-080	Single capture block, suits cable up to 80mm



Cable Tray Rollers

CLP Code	Description
CTR-050	Cable Tray unit used to form a radius by bolting to individual rungs in the tray or used as a multiple unit.
CTR-080	Cable Tray unit with twin rollers, used where changes in a vertical direction are required.
CTR140	Cable Tray roller for cable up to 140mm diam.



CABLE LAYING ACCESSORIES

Splicers table with Fold Up Legs

Size 1200mm x 500mm x 635mm High - Weight 11 KGS.
Table features adjustable legs which can be used on uneven ground.

CLP Code Description

QJI-125 Splicers Table - Folding Legs



Manhole Guards

Manufactured from Aluminium for ease of handling.
Standard models listed.
Standard colours are safety yellow and white.
Other colours are available on request.

CLP Code Description

MGA-140R Manhole Guard with Roof
MGA-140 Manhole Guard with No Roof



CLP Code Description

MGA-070R Bi-fold Manhole Guard with Roof
MGA-070 Bi-fold Manhole Guard with No Roof

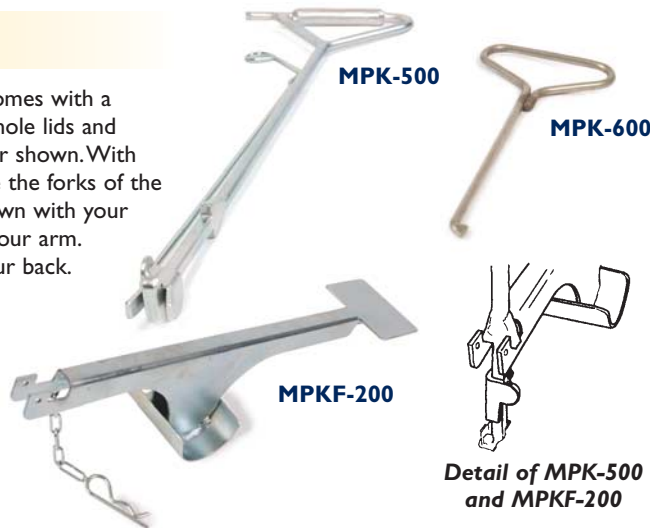
MGA-070 Folds down for station wagon or sedan boot.

Manhole Pit Key

The Telstra standard manhole pit key, which comes with a safety lock, has two functions, first, to lift manhole lids and second, to act as a support for the breaker bar shown. With difficult and jammed manhole lids, simply place the forks of the breaker under the key's side-fins and press down with your foot on the other end whilst pulling up with your arm. This lifts stubborn lids with ease and saves your back.

CLP Code Description

MPK-500 Manhole Key
MPKF-200 Manhole Lid Breaker
MSK-600 Manhole Security Key



Detail of MPK-500 and MPKF-200

Long Handled Lifter

Suits Heavy Duty pit lids.

CLP Code Description

MPKF-01 Long Handle Lifter



Pillar Box Spanner

Spanner to suit 21mm x 26mm AF (1/2" x 5/8" BSW).

CLP Code Description

PBS-2126 Pillar Box Spanner



CABLE LUBRICANT

Cable Lubricant Selection Guide

Aqualube A — Type ALA Clear

General purpose cable lubricant: Electrical contractors and Utility linesmen will find 'Type A' excellent for all general cable hauling operations. Suitable for all cable including fibre optic, and all conduits, it is a pourable liquid with an unusually stringy flow.

CLP Code Description

ALA-01	1ltr Bottle (supplied in carton of 12)
ALA-20	20 ltr Drum
ALA-200	200 ltr Drum

Aqualube G — Type ALG Blue

Heavier grade cable lubricant: Effective for conduit prelubrication in concrete conduits, vertical pulls, old, rough or water-filled conduits. Excellently suited for large-sized cable during extra long distance pulls and hot weather environments.

CLP Code Description

ALG-01	1ltr Bottle (supplied in carton of 12)
ALG-20	20 ltr Drum
ALG-200	200 ltr Drum

Aquagel — Type AQG Green

High Performance Lubricant Gel: Suitable for heavy power cable and roughly sheathed cable (eg. hessian, bitumen etc.). This is a thixotropic gel which enables hand application to the cable.

CLP Code Description

AQG-01	1ltr Bottle (supplied in carton of 12)
AQG-20	20 ltr Drum
AQG-200	200 ltr Drum



CLP Lube can be packaged to suit your needs. Please contact our sales staff for assistance.

All Aqualube and AquaGel products leave a powder residue which remains indefinitely after evaporation and which, with the addition of water; allows the cable to be easily removed at a later date.

CLP's technical department can help - contact them on (07) 3276 7166.

CABLE WINCHING & JETTING EQUIPMENT

CLP is the Australian agent for Plummet Cable pulling machines, winches and equipment. www.plummetaz.com

Cable Jet

Fibre optic blowing jet for cables 9-18mm diameter - Pneumatic drive.

CLP Code

FJ0029804

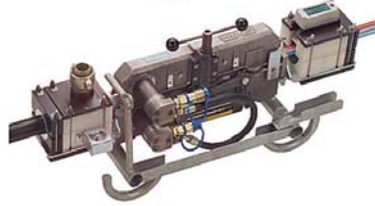


Super Jet

Hydraulic drive blowing jet for cables 14-32mm diameter. Including hydraulic power pack - N800000.

CLP Code

FJ0010500



Y Connector

Connector used to install an additional cable in an already occupied duct and can also be used for over blowing. Cables 9-36mm diameter. Duct outer diameter between 20-63mm diameter.



Microjet PR-140

Accepts microcables diameter between 3 and 7.5mm. Accepts microduct outer diameters between 5 and 12mm.



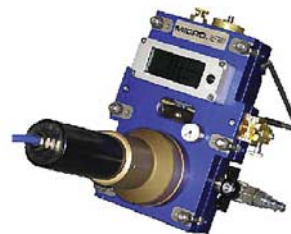
Microjet EM-25

Accepts microcable bundles diameter up to 3mm. Accepts microduct outer diameters between 3 and 8mm.



Microjet ER-60

Accepts microcables diameter between 2.5 and 6mm. Accepts microduct outer diameters between 3 and 8mm.



Rolly Winch

Petrol driven 125mm capstan winch for use with vehicle tow ball. Ideally suited to small cable and fibre optic work. Free standing model available.

CLP Code

Description

RW-300

Rolly Winch, 1.25 kN



CONDUIT & MANHOLE CABLE GUIDES

Manhole Guides

CLP Code Description

MPSG-050 Pivoting cable slipper for cable up to 50mm dia.
 MPSG-100 Pivoting cable slipper for cable up to 100mm dia.

CLP Code Description

MPRG-080 Pivoting cable bend with rollers for cable up to 80mm dia.
 MPRG-140 Pivoting cable bend with rollers for cable up to 140mm dia.

CLP Code Description

MRG-140 Single Roller Guide for cable up to 140mm dia.

CLP Code Description

MTRG-140 Twin Roller Guide for cable up to 140mm dia.

CLP Code Description

MTRGH-140 Twin Roller Guide with hangers for supporting upside down on edge of manhole.



Split Lock Roller Guide

CLP Code Description

SRG-050 Suits 50mm Conduit
 SRG-080 Suits 80mm Conduit
 SRG-100 Suits 100mm Conduit
 SRG-125 Suits 125mm Conduit
 SRG-150 Suits 150mm Conduit



Aluminium Cable Guides

Available in straight horns, 90° and 45° bends, suitable for 100mm conduit.

CLP Code Description

ACG-100 Straight
 ACG-145 45° Bend
 ACG-190 90° Bend



Cable Guiding Bends / Slippers

CLP Code Description

CCG-028 Suits 28mm Conduit
 CCG-035 Suits 35mm Conduit
 CCG-050 Suits 50mm Conduit
 CCG-080 Suits 80mm Conduit
 CCG-100 Suits 100mm Conduit
 CCG-125 Suits 125mm Conduit
 CCG-150 Suits 150mm Conduit



CONDUIT & MANHOLE CABLE GUIDES

Hinged Cable Guide Bends / Slippers

CLP Code Description

SCG-050	Suits 50mm Conduit
SCG-080	Suits 80mm Conduit
SCG-100	Suits 100mm Conduit
SCG-125	Suits 125mm Conduit
SCG-150	Suits 150mm Conduit



Corner Rollers for Trenches

Suitable for loads up to 500kgs.

CLP Code Description

TCR-200	Trench Corner Roller
STK-400	400mm Roller Spike
STK-600	600mm Roller Spike
STK-1200	12mm Roller Spike



Trench Rollers

Suitable for loads up to 500kgs.

CLP Code Description

TSR-140	Raised Trench Roller Guide
---------	----------------------------



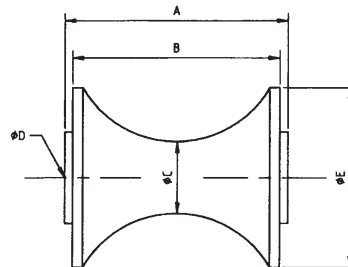
CLP Code Description

FSR-140	Flat Trench Roller Guide
---------	--------------------------

Replacement Rollers for Underground and Aerial Construction Equipment

CLP Code Description

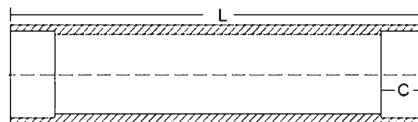
ALR-050	Suits 50mm Cable
ALR-080	Suits 80mm Cable
ALR-100	Suits 100mm Cable
ALR-140	Suits 140mm Cable



(mm)	A	B	ØC	Pin ØD	E
ALR-050	75	65	21	10.0	61
ALR-080	104	91	30	12.0	81
ALR-100	124	115	40	16.0	100
ALR-140	165	155	51	16.0	120

Replacement Rollers suit Cable Tray & Insulator Clamp

CLP Code	L mm	B mm
ICB-001-6	155	33.7
TCR-200-4-1	205	48.3
CTR-050-3	99	48.3



DRUM HANDLING EQUIPMENT

Hydraulic Drum Jacks

Two sizes of manually operated jack stands allow for the differing sizes of drums up to a flange diameter of 3 metres and a width of 1.2 metres. Another key feature is that the hydraulic drum jack conveniently folds down for storage and transport.

CLP Code	Max Weight	Max Dia	Bar Length
HDJ-1500	3 tonnes	1200mm	2 metres
HDJ-2500	5 tonnes	1800mm	3 metres

HDB-2500 Drum Brake to suit HDJ-2500 (Optional)



Drum Trolley

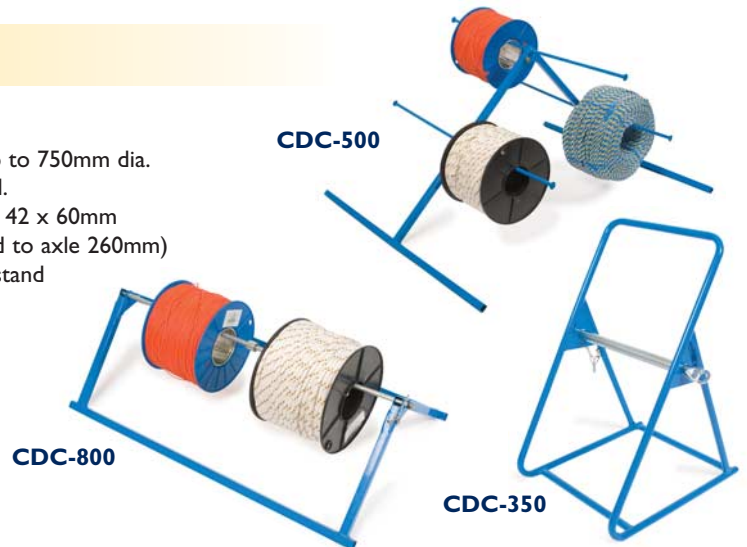
Suitable for cable drums with a flange diameter up to 1400mm and a width of 700mm. Maximum safe load 220kg. The Drum Trolley can be collapsed for easy storage and transport.

CLP Code	Description
HDT-0901	Drum Trolley with foot brake



Drum Caddy

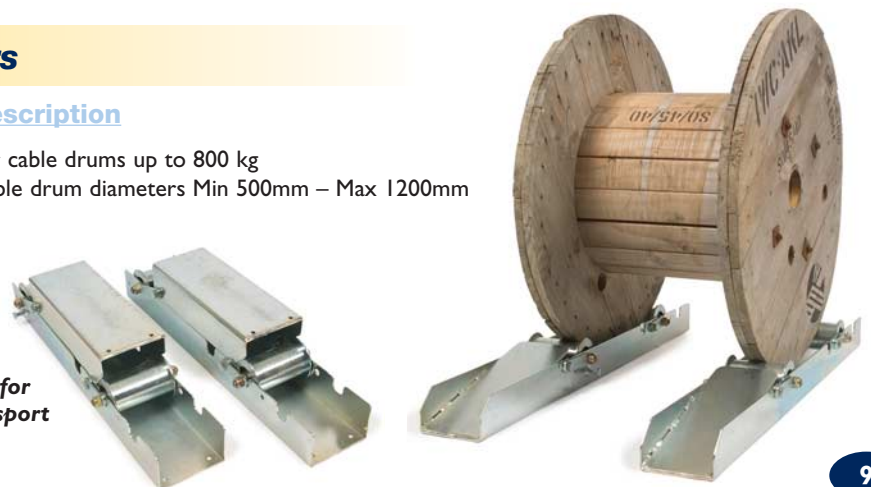
CLP Code	Description
CDC-350	For cable drums up to 750mm dia.
CDC-800	Fold-up drum stand. (Approx size 900 x 42 x 60mm Height from ground to axle 260mm)
CDC-500	Fold-up cable reel stand



Drum Rollers

CLP Code	Description
DRR-800	For cable drums up to 800 kg Cable drum diameters Min 500mm – Max 1200mm

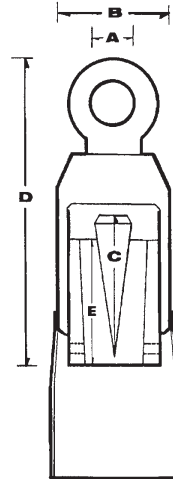
DRR-800 Folded for storage and transport



REUSABLE HAULING ATTACHMENTS

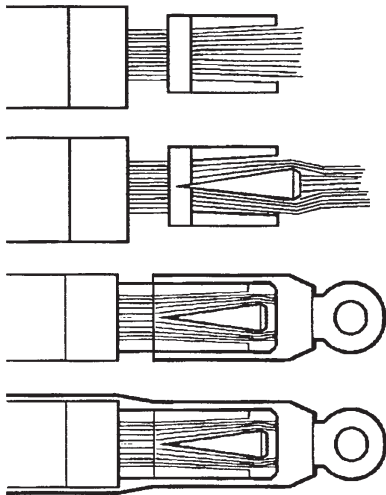
Reusable Power Cable Hauling Eye

CLP's reusable power cable hauling eye is designed to offer maximum gripping strength on cable conductors of all types and sizes and suits all cable with an inner core. A short extension sleeve covers and protects the face of the cable insulation during hauling.



CLP Code	Conductor Dia	Inside Dia of Eye A	Outside Dia of Head B	Length Spike C	Length of Head D	Length of Nut E
CER-2025	20-25	24	60	70	95	50
CER-2530	25-30	24	60	70	95	50
CER-3035	30-35	24	70	82	125	80
CER-3540	35-40	29	70	100	125	80
CER-4045	40-45	29	82	116	190	90
CER-4550	45-50	29	89	116	215	95
CER-5055	50-55	29	100	135	215	95
Tolerance	± 1	± 2	± 3	± 3	± 1	

Procedures for Installing the Reusable Power Eye



1. Remove all insulation materials, including the sheathing on the sectors inside, for a length 40mm longer than the nut used. Slide the nut over the exposed conductors securing it about 20mm in front of the sheathing stack, with the grub screws in the rear shoulder of the nut.
2. Hammer the conical shaped pin into the mass of wires until it won't move any further. If the top of the pin is below the lip of the nut by more than 20mm then a larger pin should be used. (The pin will protrude past the end of the nut, this is normal.)
3. Screw the head onto the nut and secure it with the grub screws situated at the bottom of the head.
4. If the head has a sleeve attached, then this should be crimped down onto the outer sheath of the cable to seal the cable from water and dirt, or covered with a piece of heat shrink tubing.

Reusable Fibre Optic Cable Hauling Eye

Fibre optic hauling eyes designed for securing the cable in one simple operation without affecting the fibres. No special tools are required, making these eyes easy to use in the field.



CLP Code	Description
FOH-1950	19mm OD Head 5.0mm ID
FOH-1965	19mm OD Head 6.5mm ID
FOC-20	Sleeve to suit CTM of 2.0mm
FOC-26	Sleeve to suit CTM of 2.6mm
FOC-31	Sleeve to suit CTM of 3.1mm
FOC-37	Sleeve to suit CTM of 3.7mm
FOC-40	Sleeve to suit CTM of 4.0mm
FOS-12	Sleeve to suit 8-11mm OD cable
FOS-18	Sleeve to suit 11-17mm OD cable
FOS-23	Sleeve to suit 17-22mm OD cable
FOG-00	Super gel Adhesive
FOP-00	Punch for removing FOC

CLP Code	Description
FOH-KIT	Reusable CS fibre eye pulling kit

Kit comprises

1 x FPB-100 Plastic box	1 x FOS-23 Sleeve to suit 17-22mm OD cable
1 x FOG-00 Super gel Adhesive	3 x FOC-25 Sleeve to suit CTM of 2.6mm
1 x FOP-00 Punch	3 x FOC-31 Sleeve to suit CTM of 3.1mm
1 x FOS-12 Sleeve to suit 8-11mm OD cable	1 x FOH-19 19mm Head
1 x FOS-18 Sleeve to suit 11-17mm OD cable	2 x Allen keys to suit

MANDRELS, SWIVELS & BREAKAWAY FUSES

Conduit Cleaner

Suitable for cleaning conduit of sand, mud and other debris.

CLP Code	Description
RCC-050	Suits 50mm Conduit
RCC-080	Suits 80mm Conduit
RCC-100	Suits 100mm Conduit
RCC-125	Suits 125mm Conduit
RCC-150	Suits 150mm Conduit



Can be made to order for client's specific requirements.

Short Rubber Slug

Suitable for proving duct integrity, cleaning sand, mud & spreading lubricant, especially on tight radius bends.

CLP Code	Description
SRS-050	Suits 50mm Conduit
SRS-080	Suits 80mm Conduit
SRS-100	Suits 100mm Conduit
SRS-125	Suits 125mm Conduit
SRS-150	Suits 150mm Conduit



Can be made to order for client's specific requirements.

Proving Mandrel

Suitable for proving or testing duct integrity.

CLP Code	Description
PMN-014	Suits 15mm Conduit
PMN-018	Suits 20mm Conduit
PMN-023	Suits 25mm Conduit
PMN-030	Suits 32mm Conduit
PMN-050	Suits 50mm Conduit
PMN-080	Suits 80mm Conduit
PMN-100	Suits 100mm Conduit
PMN-150	Suits 150mm Conduit



Can be made to order for client's specific requirements.

High Pressure Drawline Carrier

Only for use with compressed air in long runs or water-filled conduit. Ideally suited for pushing water ahead of itself.

CLP Code	Description
PDC-050	Suits 50mm Conduit
PDC-080	Suits 80mm Conduit
PDC-100	Suits 100mm Conduit
PDC-125	Suits 125mm Conduit



Can be made to order for client's specific requirements.

Wire Brush Mandrel

Steel bristles for cleaning conduit of sand, rocks, grit and other light obstructions.

CLP Code	Description
WBM-050	Suits 50mm Conduit
WBM-080	Suits 80mm Conduit
WBM-100	Suits 100mm Conduit
WBM-125	Suits 125mm Conduit
WBM-150	Suits 150mm Conduit



MANDRELS, SWIVELS & BREAKAWAY FUSES

Swivels & Breakaway Fuses

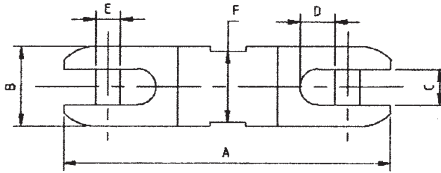
SWI Type (Clevis to Clevis)



SWIRF Type



The swivels have been manufactured with sealed bearings and are precision machined from high grade steel. They have been NATA certified for a 3:1 safety factor.



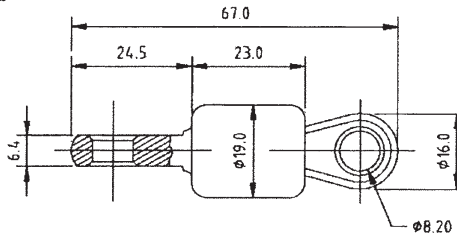
SWI Type (Clevis to Clevis)

CLP Code	A (mm)	ØB	C	D	ØE	F AF	Load
SWI-16	88.0	16.0	7.0	8.6	5.0	14.0	6kN
SWI-22	114.0	22.0	10.0	10.0	7.94	20.0	10kN
SWI-33	144.0	33.0	16.0	16.8	10.0	29.0	18kN
SWI-40	173.0	40.0	18.0	22.3	12.0	36.0	35kN
SWI-60	250.00	60.0	26.0	25.4	19.05	56.0	50kN

By removing the high tensile bolt from the centre, and replacing it with the fuse of your choice, you can convert the swivels into a Breakaway Fused Swivel. (Please contact sales office for sizes.) Fuses available 0.6kN to 62kN rated at +10%.

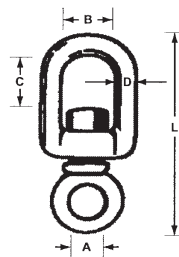
SWIRF Type

CLP Code	Max Dia	Load
SWIRF-78	Swivel Eye to Eye	6kN
SWIRF-150	D Shackle to suit SWIRF-78	6kN



Galvanised Heavy Duty Swivels

CLP Code	D Ø mm	A mm	B mm	C mm	L mm
RWB320A	10	18	30	21	103
RWB320B	12	20	36	30	130
RWB320C	16	25	42	42	155
RWB320D	20	30	47	42	178
RWB320E	25	40	60	57	250



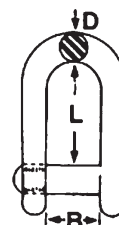
Stainless Steel Swivels - Eye & Eye

CLP Code	D Ø mm	L mm	B mm	C mm	Br/Str/Kg
56106	6	65	15	15	1350
56108	8	90	20	22	2500
56110	10	115	24	27	3500
56113	13	154	56	31	N/A



D Shackles 316 S/S - CSK Slotted Head

CLP Code	D Ø mm	L mm	B mm	C mm	Br/Str/Kg
56060	6	12	12	21	2000
56061	7	14	13	24	3000
56062	8	15	15	28	3600
56063	10	20	19	35	5500



QUICK FLICK SHELTERS

Provide protection from adverse weather conditions in seconds

CLP's Quick Flick Shelters, with their integral frame and skin, allow you to erect the shelter in seconds, (similar to opening an umbrella) to provide a clear work area. The lightweight polyester fabric, selected for its resistance to mildew and ultraviolet rays, has been further treated for fire retardance and water resistance. A zip in the back wall provides an entry for cables, whilst a port hole in the side wall provides a connection point for a heater or cooler blower. Fibreglass rods, chosen for their strength and flexibility, are used on the frame which, if damaged, can be easily repaired.

Two QUICK FLICK Shelters can be clipped together at the main opening to double your undercover work area.

The shelter has been designed for continual rugged use and comes with a full 12 month warranty against faulty workmanship.



CLP Code	Dimensions (Metres)	Description	Supplied with
QFS-180T	1.8 x 1.8 x 1.8	Shelter, twin capability	Carry bag, 9x Sand bag, Ground sheet, 3x Guy ropes & pegs
QFTT-2525	2.4 x 2.5 x 2.0	"A" Frame Trench Tent	Carry bag, 6x Sand bag, Ground sheet, 2x Guy ropes & pegs
QMS-150S	1.4 x 1.4 x 1.2	Manhole guard cover	Carry bag

RODDING EQUIPMENT

Continuous Fibreglass Duct Rod - Tigerrod

TIGEROD is CLP's range of continuous fibreglass duct rod. All diameters are supplied with a 1mm copper wire trace and detachable pulling eyes as standard.

It is made from pultruded fibreglass strands jacketed with a 1mm tough polypropylene coating to give a unique combination of strength and durability.

- Dispenser units have a hand operated brake for safety and ease of use.
- TWDK-68 4 wheel kits are available for TDUS-6 and TDUS-8 dispensers.



Dispenser	Rod Dia	OD	Conduit Size mm	Length												
				50m	60m	80m	100m	120m	125m	150m	200m	250m	300m			
				(Add below number to complete TDUS code - eg.TDUS-3060)												
TDUS-3	3mm	5mm	up to 50		3060	3080										
TDUS-4	4mm	6mm	50 - 80	4050	4060	4080	4100	4120		4150						
TDUS-6	6mm	8mm	80 - 100			6080	6100	6125		6150	6200					
TDUS-8	8mm	10mm	100 - 150				8100		8125	8150	8200	8250	8300			

Refill Rolls to suit above Dispensers

- Refill rolls of rod are available in standard lengths as shown in the table.
- Please order refills with the part number TRF.

Code example: Refill roll to suit TDUS-3060 dispenser is TRF-3060.

Non standard lengths up to the maximum shown for each rod diameter are available on request.

Hand Held Mini Rodder (Donut Rodder)

Economic, hand held, lightweight and robust mini rodder for the small project. 3mm x 25 metre (conductive)

CLP Code

MRH-03



Hand Rods PVC and Fibreglass

All rods are fitted with a male and female threaded coupling on each end suitable for use with CLP rodding accessories.



Material	Rod Size	3mm	6mm	8mm	22mm
(Please quote CLP code number shown below)					
Fibreglass	1.5 mt	THR-0415	THR-0615	THR-0815	•
Fibreglass	2.0 mt	THR-0420	THR-0620	THR-0820	•
Fibreglass	3.0 mt	•	•	THR-0830	•
PVC	3.0 mt	•	•	•	THR-223M

Nylon Coils Flat & Round

Nylon Coil - Round

3mm diameter with spring leader. Non conductive, very flexible for small conduit work.

CLP Code Description

NSGLS-10 (10 mt Roll)
NSGLS-20 (20 mt Roll)

Nylon Coil - Flat

15mm x 4mm. Non conductive, very flexible excellent for small cavity work.

CLP Code Description

NSGLS-10 (10 mt Roll)



RODDING EQUIPMENT

Roller Guide

The multidirectional twist stops the rod from getting jammed under the cable.

CLP Code Description

TRG-22	Roller Guide 22 to suit 22mm PVC rod
TRG-68	Roller Guide 68 to suit 6mm & 8mm rod



Flexible Leader

Screwed onto the end of the rod to assist through tight bends.

CLP Code Description

TFL-04	Fibreglass to suit 4mm rod
TFL-68	Fibreglass to suit 6mm & 8mm rod
TFL-22	Fibreglass to suit 22mm PVC rod
SFL-03	Metal Spring to suit 3mm rod
SFL-04	Metal Spring to suit 22mm PVC rod
SFL-68	Metal Spring to suit 6mm & 8mm rod



Couplings

Glued onto ends of continuous fibreglass and PVC rods.

CLP Code Description

Male	Female	
TMC-03	TFC-03	to suit 3mm rod
TMC-04	TFC-04	to suit 4mm rod
TMC-06	TFC-06	to suit 6mm rod
TMC-08	TFC-08	to suit 8mm rod
TMC-22	TFC-22	to suit 22mm PVC rod



Removable Pulling Eyes

CLP Code Description

TRE-03	Pulling Eye 03 to suit 3mm rod
TRE-04	Pulling Eye 04 to suit 4mm rod
TREB-68	Pulling Eye 68 to suit 6mm & 8mm rod
TRE-22	Pulling Eye 22 to suit 22mm PVC rod



Removable Tapered Knob

CLP Code Description

TRK-03	Tapered Knob 03 to suit 3mm rod
TRK-04	Tapered Knob 04 to suit 4mm rod
TRK-68	Tapered Knob 68 to suit 6mm & 8mm rod



Joining Kit

Consists of 3 joiners, 2 part epoxy glue, mixing stick and emery.
NOTE: Items can be sold separately*.

CLP Code Description CLP Code* Description

TJK-03	Suit 4.5mm O/D	TJ-03	Joiner for 3mm rod
TJK-04	Suit 6.0mm O/D	TJ-04	Joiner for 4mm rod
TJK-06	Suit 8.0mm O/D	TJ-06	Joiner for 6mm rod
TJK-08	Suit 10.0mm O/D	TJ-08	Joiner for 8mm rod



RODDING EQUIPMENT

Universal Kit

Consists of 2 lots of 3 joiners (See below for kit components and relevant codes), 2 part epoxy glue, mixing stick and emery.

CLP Code	Description
----------	-------------

UJK-03	Kit comprises: 2 x TMC-03, 2 x TJ-03, 2 x TRE-03
UJK-04	Kit comprises: 2 x TMC-04, 2 x TJ-04, 2 x TRE-04
UJK-06	Kit comprises: 2 x TMC-06, 2 x TJ-06, 2 x TREB-06
UJK-08	Kit comprises: 2 x TMC-08, 2 x TJ-08, 2 x TREB-08



Swivel Couplings

Used to join two lengths of rod together.

CLP Code	Description
----------	-------------

TSC-68FF	Swivel Coupling FF - For 6 and 8mm rod
TSC-68MF	Swivel Coupling M - For 6 and 8mm rod



Mini Harness

For pulling back more than one cable at a time.

CLP Code	Description
----------	-------------

TMH-22	Mini Harness for 22mm rod
TMH-68	Mini Harness for 68mm rod



Sand Scoop

For removing debris from conduit.

CLP Code	Description
----------	-------------

TSS-0845	Suits 8mm rod, 450mm conduit
TSS-0890	Suits 8mm rod, 400mm conduit
TSS-2290	Suits 22mm rod, 400mm conduit



Hook 'n' Loop

By entering from opposite ends, the Hook 'n' Loop set makes coupling of two rod lengths easy.

CLP Code	Description
----------	-------------

THL-0890	Suits 8mm rod & 100mm conduit
THL-2290	Suits 22mm rod & 100mm conduit



Crank Handle

Connects on to end of 22mm hand rods to assist twisting the rods in a clockwise direction.

CLP Code	Description
----------	-------------

TCH-22MF	Crank Handle
----------	--------------



UNDERGROUND CABLE EQUIPMENT

Electric Blowers

Delivering 7 cubic metres of air at a safe low pressure, this unit, comprising two motors, will effectively blow a lightweight drawline up 1000 metres of lubricated unoccupied conduit.

Each motor will deliver approximately 3.5 cubic metres of air per minute. This low pressure system has been designed for rough external work suited to long PVC duct runs with many bends.

This one man operation is a quick and safe method of roping conduit.

- Weather proof switches
- Separate fan from the motor for longer motor life
- Rubber feet to insulate unit from the ground
- Camloc fittings on hose pipe

CLP Code Description

DBI-02K	2 Stage Electric Duct Blower kit comprising the following parts: 1 x DBI - 02 2 Stage Electric Blower 1 x DAH - 06 5m hose assembly with fittings 1 x DAH - 30 Conduit Sealer 32-63mm 1 x DAH - 40 Conduit Sealer 63-150mm 1 x CKC - 800 Galvanised kit box
---------	--

Individual Components

CLP Code Description

DBI-02	2 stage Electric Blower
DAH-050	50mm Air Hose 5M
DAH-060	Seal Off Body
DAH-080M	Male Coupling
DAH-080F	Female Coupling
DAH-020	Conduit Sealer 13 - 25mm
DAH-030	Conduit Sealer 32 - 63mm
DAH-040	Conduit Sealer 63 - 150mm
DAH-506	Hose assembly with fittings



Drawline Pressure Roping Gun and Seal-off Kit

For hands free operation. Suitable for conduits ranging from 50mm to 150mm and roping grommets to accommodate rope from 4mm to 10mm.

CLP Code Description

DPL-400	Pressure Roper Gun***
DPL-350	Adapter for DAH Seal-Off**
DPL-600	Tool box
DPL-050	50mm Conduit Seal-Off
DPL-080	80mm Conduit Seal Off
DPL-100	100mm Conduit Seal-Off
DPL-125	125mm Conduit Seal Off
DPL-150	150mm Conduit Seal-Off
DRG-04	4mm Grommet
DRG-06	6mm Grommet
DRG-08	8mm Grommet
DRG-10	10mm Grommet
DRG-12	12mm Grommet
DPL-500	Complete Kit*



*Kit comprises: 1 Gun, 5 Seals, 4 Grommets, Tool box.

**Not hands-free.

***Extension available for double seal-offs to be used.

UNDERGROUND CABLE EQUIPMENT

Drawline Pressure Roper (NEW)

Operates similarly to DPL-400 except adapter fits straight into the conduit.

CLP Code	Description
OCA-100	Occupied conduit adapter



Manufactured Poly Drawline

Manufactured from natural polypropylene in light & heavy gauge.

CLP Code	Description
DL-31000	3mm x 1000mt rolls (orange) very tough & compact
DL-4850	4mm x 850 mt Heavy gauge Poly Drawline
DL-6400	6mm x 400 mt Blue Yellow "Parramatta Rope"
DL-140Y	10mm x 100 mt Double Braided Polyester Rope



Spectra Rope

Is constructed with internal Spectro filaments encased inside a polyester braid. Lengths cut to your requirements.

CLP Code	Description
DL-03	3mm dia - 3.92kN U.T.S.
DL-04	4mm dia - 7.84kN U.T.S.
DL-05	5mm dia - 9.50kN U.T.S.
DL-06	6mm dia - 16kN U.T.S.
DL-08	8mm dia - 28kN U.T.S.
DL-10	10mm dia - 32kN U.T.S.
DL-12	12mm dia - 56kN U.T.S.
DL-14	14mm dia - 73kN U.T.S.



Special Service
Eyes can be spliced upon request

Wire Cable Bridles

From two to four slings in staggered lengths with tongue or clevis ends. These are fitted to a single hauling ring for multiple cable or subduct hauling.

CLP Code	Description
WCB-702	Two Slings
WCB-703	Three Slings
WCB-704	Four Slings



UNDERGROUND CABLE EQUIPMENT

Balloon Line Carriers

Shaped like a balloon, with a rigid plastic mouth to ensure the balloon stays inflated.

<u>CLP Code</u>	<u>Description</u>
DBL-050	Suits 50mm Conduit
DBL-080	Suits 80mm Conduit
DBL-100	Suits 100mm Conduit
DBL-125	Suits 125mm Conduit
DBL-150	Suits 150mm Conduit
DBL-190	Suits 190mm Conduit
DBL-225	Suits 225mm Conduit



Note - Special sizes can be made to order

Bag Line Carriers

<u>CLP Code</u>	<u>Description</u>
DCB-035	Suits 35mm Conduit
DCB-050	Suits 50mm Conduit
DCB-080	Suits 80mm Conduit
DCB-100	Suits 100mm Conduit
DCB-125	Suits 125mm Conduit
DCB-150	Suits 150mm Conduit
DCB-190	Suits 190mm Conduit
DCB-225	Suits 225mm Conduit



Note - Special sizes can be made to order

Foam Line Carriers

For short runs in small to medium size conduits or to pre-lubricate the conduit.

<u>CLP Code</u>	<u>Description</u>
DFC-020	Suits 20mm Conduit
DFC-030	Suits 30mm Conduit
DFC-040	Suits 40mm Conduit
DFC-050	Suits 50mm Conduit
DFC-080	Suits 80mm Conduit
DFC-100	Suits 100mm Conduit



Plastic Cone Shaped Line Carriers

For rodding at high speed through long distances of unoccupied conduit. The carrier will operate in out of round duct or over minor obstructions.

<u>CLP Code</u>	<u>Description</u>
DCC-050	Suits 50mm Conduit
DCC-100	Suits 100mm Conduit
DCC-125	Suits 125mm Conduit
DCC-150	Suits 150mm Conduit



WIRE CABLE GRIPS

CLP manufactures a range of hand woven wire cable grips which is designed for hauling power cable, telephone cable, fibre optic cable, coaxial cable and winching rope through conduits, trenches and overhead poles. High quality galvanized steel wire is used in weaving the individual grips – stainless steel is available on request. The weaving process leaves no loose or frayed wires at the tail end to cause damage to the cable or the conduit. The length of grips can also be customised for individual clients requirements.

Ferrules are swaged in our factory using a 150 tonne hydraulic press to ensure maximum strength and durability. Factors such as the diameter of the grip and the tension applied through hauling all contribute towards determining the effective safety of the grip. Stress, misuse and wear and tear will affect the safe working load of the grips. Changing grips sooner rather than later is recommended. A safety factor of 3 has been applied to the safe working load listed in the selection charts.

Following are the standard types of grips and their cable applications:

Closed Tubular Single Eye CLP Code: TCG

For light to medium hauling of communication and power cable. To be used in underground conduits, trenches, cabling trays and for service lines to factories.

Open Tubular Double Eye CLP Code: DCG

Ideally suited for the mining industry where cable needs to be laid and secured to the walls of shafts and tunnels. NB The effective strength of the grip is halved when hauling with only one eye.

Open Tubular Offset Eye CLP Code: OCG

Used for pulling slack during final placement of cable in exchange buildings and at termination points such as pole tops where the end of the cable cannot be used to haul from.

Lace-up Double Eye CLP Code: LCG

Generally used for supporting electricity cable in a vertical or sloping position and is also ideal for use in manholes where the longitudinal movement of the cable caused by road vibration needs to be checked.

Product Code	Suit Cable OD mm	Grip Length mm	Maximum Tensile Load KGs
LCG-0612D	6-12mm	300	992
LCG-0916D	9-16mm	350	1360
LCG-1422D	14-22mm	400	2040
LCG-2032D	20-32mm	500	2540
LCG-3240D	32-40mm	850	3048
LCG-4055D	40-55mm	900	4572
LCG-5575D	55-75mm	900	6240
LCG-7595D	75-95mm	900	9360
LCG-95114D	95-114mm	1000	12480
LCG-114126D	114-126mm	1100	19230
OCG-0612	6-12mm	300	992
OCG-0916	9-16mm	350	1360
OCG-1422	14-22mm	400	2040
OCG-2032	20-32mm	500	2540
OCG-3240	32-40mm	850	3048
OCG-4055	40-55mm	900	4572
OCG-5575	55-75mm	900	6240
OCG-7595	75-95mm	900	9360
OCG-95114	95-114mm	1000	12480
OCG-114126	114-126mm	1100	19230
TCG-0612	6-12mm	300	992
TCG-0916	9-16mm	400	1360
TCG-1422	14-22mm	450	2040
TCG-2032	20-32mm	550	2540
TCG-3240	32-40mm	700	3048
TCG-4055	40-55mm	850	4572
TCG-5575	55-75mm	950	6240
TCG-7595	75-95mm	1000	9360
TCG-95114	95-114mm	1200	12480
TCG-114126	114-126mm	1300	19230
DCG-0612	6-12mm	300	992
DCG-0916	9-16mm	350	1360
DCG-1422	14-22mm	400	2040
DCG-2032	20-32mm	500	2540
DCG-3240	32-40mm	850	3048
DCG-4055	40-55mm	900	4572
DCG-5575	55-75mm	900	6240
DCG-7595	75-95mm	900	9360
DCG-95114	95-114mm	1000	12480
DCG-95114	95-114mm	1000	12480
DCG-114126	114-126mm	1100	19230



DO NOT USE CLP WIRE CABLE GRIPS FOR LIFTING

CLP



Cable Laying Products

17 Lombank Street ACACIA RIDGE Q. 4110

PO Box 1059 ARCHERFIELD Q. 4108

Phone: **(07) 3276 7166**

Facsimile: (07) 3276 7199

Email: sales@cablelaying.com.au

Web: www.cablelaying.com.au